

PLAY GUIDE



ROALD DAHL'S
JAMES
AND THE
GIANT PEACH JR.

Roald Dahl's James and the Giant Peach Jr.

Book by Timothy Allen McDonald
Music and Lyrics by Benj Pasek and Justin Paul
Based on the book, "James and the Giant Peach" by Roald Dahl

Presented on the LCT Main Stage: April 10 - 22, 2018



418 W. Short Street
Lexington, KY 40507
859.254.4546
www.lctonstage.org

Major Contributors:



Dear Educator -

Lexington Children's Theatre is proud to be producing our 79th season of plays for young people and their families. As an organization that values the arts and education, we have created this Play Guide for teachers to utilize in conjunction with seeing a play at LCT.

Our Play Guides are designed to be a valuable tool in two ways: helping you prepare your students for the enriching performance given by LCT's performers, as well as serving as an educational tool for extending the production experience back into your classroom.

We designed each activity to assist in achieving the Kentucky Academic Standards (KAS), including the National Core Arts Standards for Theatre. Teachers have important voices at LCT, and we rely heavily on your input. If you have comments or suggestions about our Play Guides, show selections, or any of our programming, your thoughts are greatly appreciated. Please email Jeremy Kisling, our Associate Artistic Director in Charge of Education, at jkisling@lctonstage.org.

Please use the Teacher Response form following a performance. We are thrilled that you rely on LCT to provide your students a quality theatrical experience, and we hope this resource helps you in your classroom.

LCT's Education Department

The mission of our education programming



The mission of Lexington Children's Theatre's Education Department is to **provide students of all ages with the means to actively explore the beauty, diversity, complexity, and challenges of the world around them through the dramatic process.** We strive for young people to develop their own creative voice, their imagination, and their understanding of drama and its role in society.

Your role in the play

You may wish to have a discussion with your class about your upcoming LCT experience and their role as audience members. Remind your students that theatre can only exist with an audience. Your students' energy and response directly affects the actors onstage. The quality of the performance depends as much on the audience as it does on each of the theatre professionals behind the scenes and on stage.

Young audiences should know that watching live theatre is not like watching more familiar forms of entertainment; they cannot pause or rewind us like a DVD, there are no commercials for bathroom breaks, nor can they turn up the volume to hear us if someone else is talking. Your students are encouraged to listen and watch the play intently, so that they may laugh and cheer for their favorite characters when it is appropriate.

At the end of the play, applause is an opportunity for your students to thank the actors, while the actors are thanking you for the role you played as an audience.



What to know - before the show!

Play Synopsis

James is a recently orphaned young boy who lives in an orphanage, dreaming of a better life full of adventure and joy. His parents were eaten by a rhino at the London Zoo and the only things he has left to remember them by are his father's glasses and his mother's polka dot scarf. Suddenly, James' life is turned upside down when he is adopted by his long lost aunts, Spiker and Sponge, and he goes to live in Dover.

Spiker and Sponge are lazy and greedy people who only decide to keep James so that he can do all of their chores and wait on them hand and foot. One day Spiker runs into a spider web and demands that James immediately cut down the peach tree that the web is hanging from. Then, Spiker and Sponge depart for the beach, leaving James alone in Dover. James is taking care of an earthworm and centipede when he suddenly runs into a magical character named Ladahlord. Ladahlord tells James that he has a book of magic spells that could change James' life. They work together to mix a potion called Slithering Crocodile Tongues. However, as soon as the potion is complete James trips over the bag and the magic goes everywhere. All of the bugs in James' garden chase the Slithering Crocodile Tongues and eat them leaving James alone and without any magic.

Then, Spiker and Sponge return from the beach. Initially they are angry with James because he hasn't chopped down the peach tree yet, but they then notice that the peach tree has magically grown a huge peach. Spiker and Sponge see this as a money making opportunity, and reporters and tourists flock to the tree to see the amazing Giant Peach. James finally confesses to his aunts that he is the one who made the peach grow with magic. Spiker and Sponge do not believe him and force him to sleep outside; in the process they also break his father's glasses and rip his mother's scarf.

James, outside with his parents' broken items, is heartbroken. But then suddenly, he notices a doorknob on the giant peach. He opens the door and is then quickly consumed by the peach. Inside, he meets Grasshopper, Spider, Ladybug, Centipede, Earthworm, and Glowworm. They ate the crocodile tongues and gained magical, human like characteristics. Suddenly, the stem snaps and the peach goes rolling down the hill and into the ocean.

The friends all happily float along in the peach while Spiker and Sponge decide to go after the peach because they have lost their money making opportunity and people are now mad at them for no longer owning the peach. They hop a ship and follow the peach. Meanwhile, the peach is attacked by sharks but James saves the day by coming up with a new idea! The friends use Spider's web to attach seagulls to the peach and they fly away safely.

Finally, everyone arrives in New York City and the peach ends up on the top of the Empire State Building. When James and his insect friends finally climb down from the peach Spiker and Sponge attempt to take James back and exterminate the insects. Instead, the peach rolls over Spiker and Sponge, squishing them before they can complete the terrible deed. The insects and James live happily ever after and spend the rest of their days together as a family.

What to know - before the show!

A Giant Peach



How many synonyms (words having the same meaning) can you think of for the word giant?

We found six. See how many you can name!

- | | |
|----------|----------|
| 1. _____ | 2. _____ |
| 3. _____ | 4. _____ |
| 5. _____ | 6. _____ |
| 7. _____ | 8. _____ |

To extend the challenge use the following words and phrases: sunny, stormy, and "in danger."

KAS: LANG 4.5.c

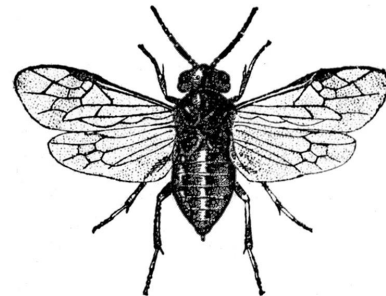
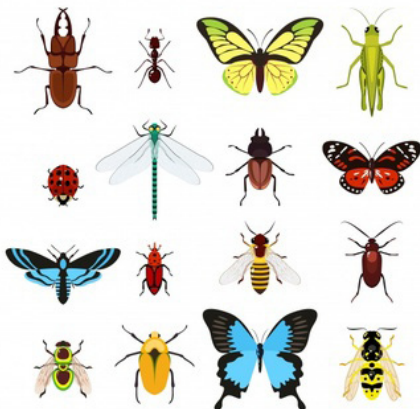
Insect Characteristics

What are the insects in *Roald Dahl's James and the Giant Peach Jr.* really like? Provide your students with books, encyclopedias, or websites that have information and pictures of the various insects in *Roald Dahl's James and the Giant Peach Jr.* (Earthworm, Spider, Ladybug, Centipede, Glowworm, Grasshopper).

Working in groups of three or four, assign one of the insects to each group and have them answer the following questions.

1. What does each insect need to survive?
2. What is their environment like? How does their environment impact behavior and survival?
3. What unique attributes does each insect possess?
4. How would the insect adapt to a changing environment?
5. Would it have been possible for this insect to survive in a peach, in the sea, in the sky?
Why or why not? What are its basic needs?

Have the group create a presentation to demonstrate the various attributes of each of the insects. Each group should also state their opinion about whether or not the insect would have survived their trip on the peach.



KAS: 2-LS4-1, 3-LS4-3, 3-LS4-2

What to know - before the show!

Aquarium Terrarium

You'll need these materials:

A small to medium size aquarium, charcoal (finely ground), some small pebbles, perlite, soil mix, assorted small plants, such as ivy, mini-African violets, small herb plants, or cacti, glass or plastic for top.

What to do:

- Wash and dry the aquarium, in thin layers, add the charcoal, pebbles, perlite, and soil.
- Make soil deep enough to support a small plant, approximately 1 1/2 to 2 inches deep.
- Water plants well and remove from their containers.
- With a teaspoon, dig a small hole for the root and plant the herbs, flowers, and small plants (do not put them too closely together).
- Now it's time to go out and find insects similar to the ones in *James and the Giant Peach*.
- After you collect the insects, put them in your terrarium
- Cover the aquarium with a screen top.
- Place in light but not direct sun. Water only with droplets since this will be a moist environment.
- Enjoy watching it grow!



How to grow - after the show!

A Day with James

Have students list all the characters they saw in the play on the board. Then list all of the things they learned about each of the characters while watching the play. Were they smart, fun-loving, hard working etc... Have the entire class get up and start to explore moving as each character through the room as the teacher calls out different names (Spiker, Sponge, James, Spider, Earthworm, Grasshopper, Ladybug, Centipede, etc.) Encourage students to think about how a Spider moves differently from an Earthworm, etc. and go beyond just the literal. After physically exploring each character, brainstorm together what questions would you ask each of these characters. Then have a student volunteer to come to the front of the room and assume the role of one of the characters. Ask the students questions from the list. The student must respond as if they are the character from the play. Have the young person consider how the character might sound as they talk and they are to answer the questions as the character would. An extension of this might be to have the students interview each other as the various characters.

KAS: TH:Pr4.1.1.b; TH:Pr6.1.K; TH:Re8.1.1



Refurbished Design

In our production of *Roald Dahl's James and the Giant Peach Jr.*, umbrellas were refurbished (used in a very creative or unusual way) to tell the story. What are some other household objects you can refurbish into creating a bird to carry the peach across the ocean! Maybe a paper plate or clothespin can be refurbished into creating a bird to carry the peach across the ocean! Use these objects to create a model set of this play or to design the set of another favorite story!



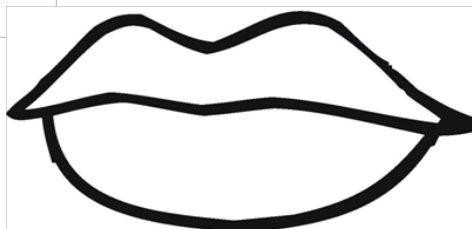
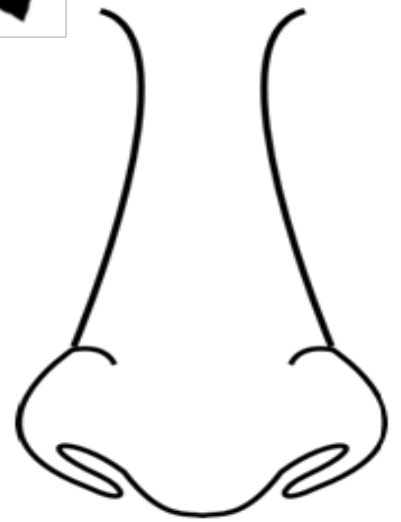
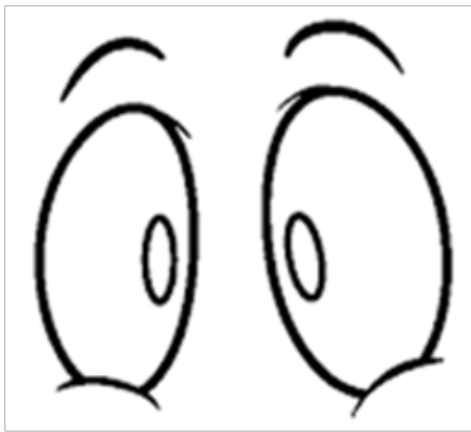
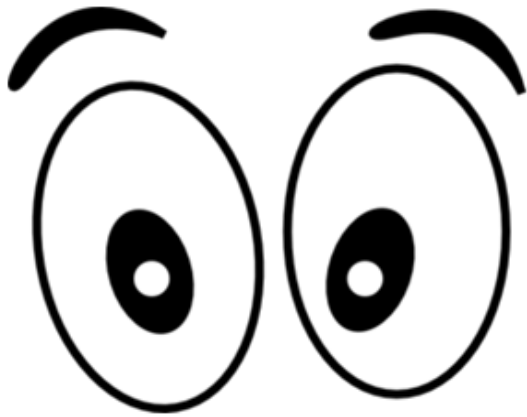
KAS TH:Cr1.1.4.b, Pr5.1.3.b; VA: Cr1.2.3

How to grow - after the show!

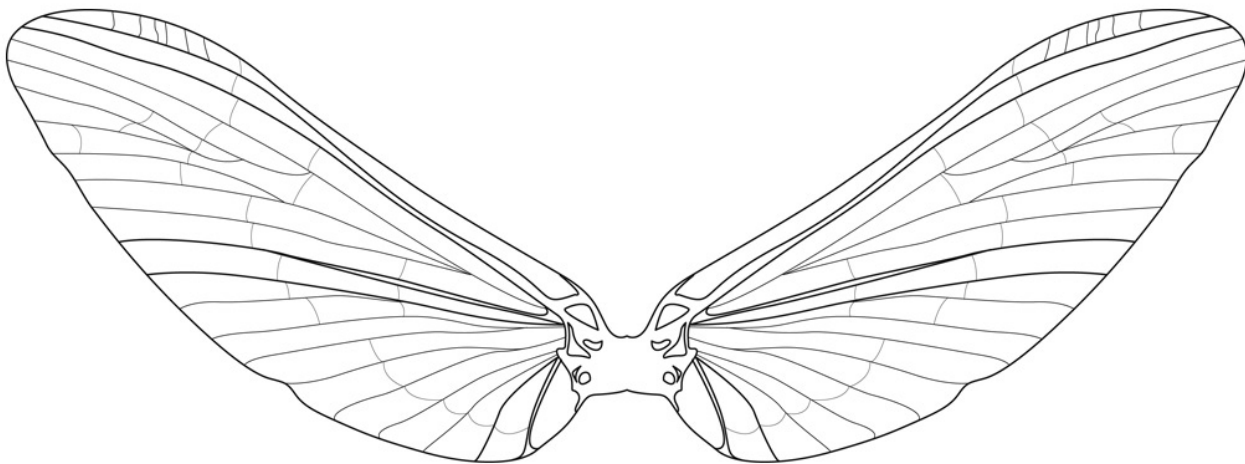
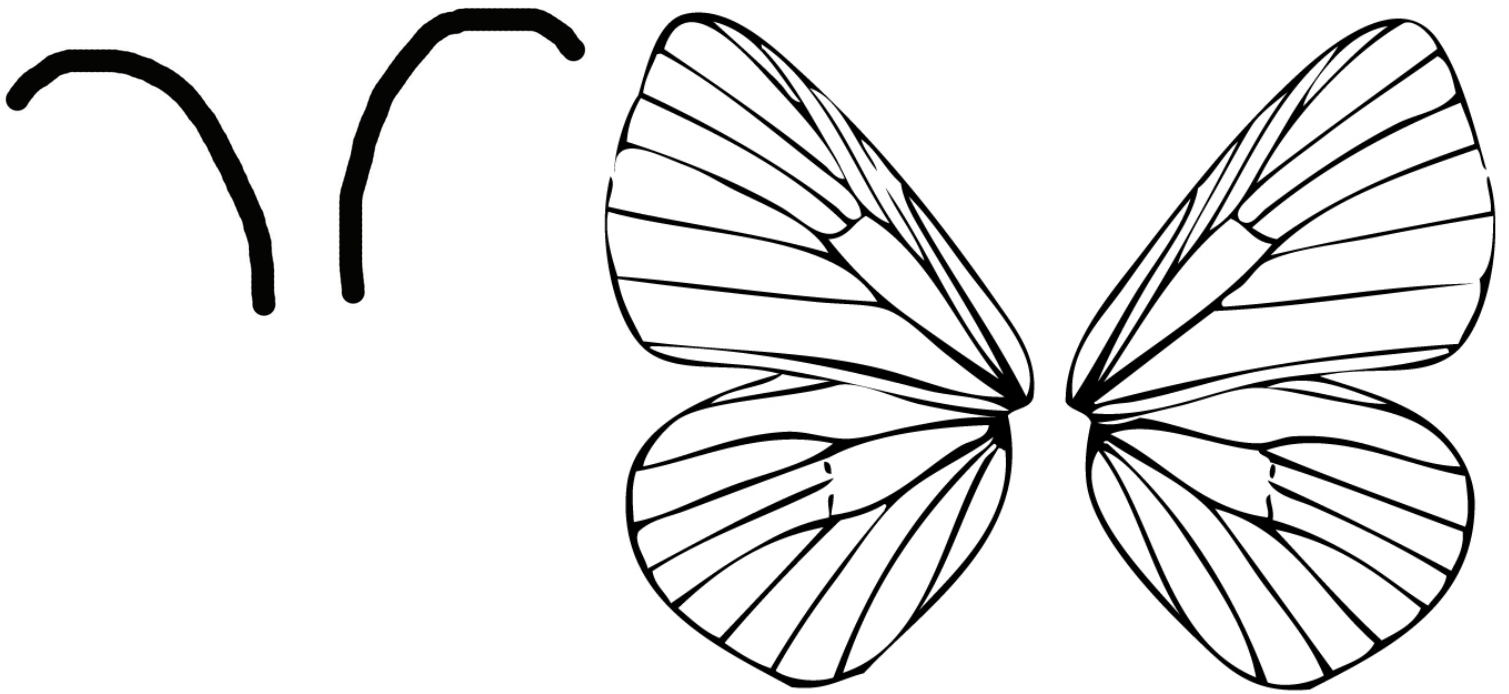
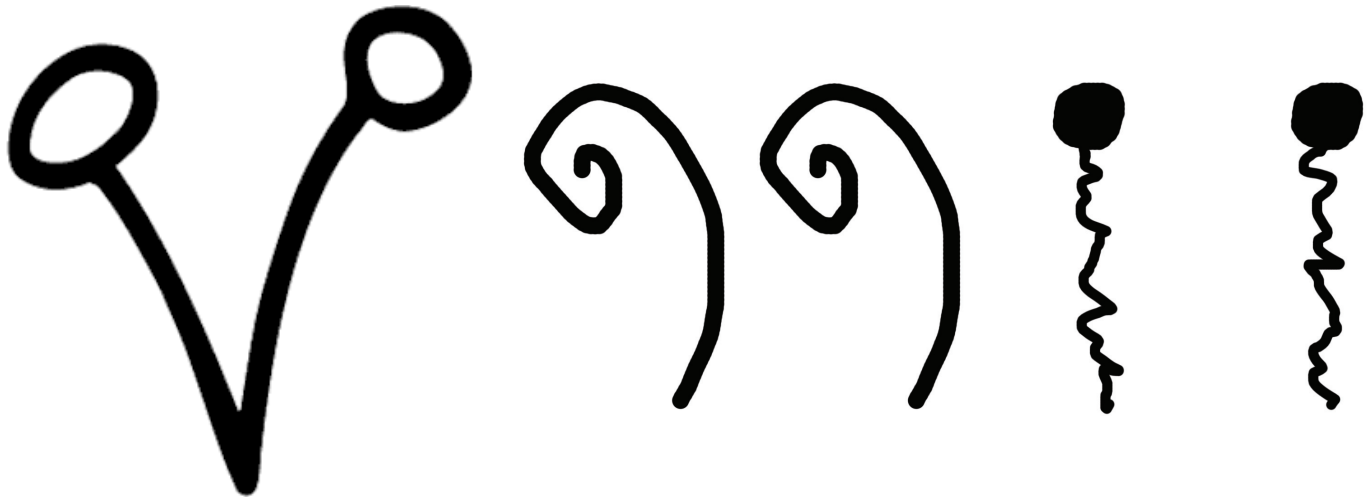
Become a Master Puppeteer!

Use the images below and on the next page to create your own puppet that would be featured in *James and the Giant Peach*! Glue each piece any way you like onto a paper bag to see your creation come to life (or create your own!). Be sure to give your character a name and add as much detail to your puppet as possible. Improvise a scene with your friends that might be featured in the play!

KAS TH: Cr1.1.3.a, Cr2.1.4.a



How to grow - after the show!



How to grow - after the show!

What to Read Next

Matilda by Roald Dahl

Matilda may only be five years old, but she is absolutely brilliant. However, her parents and evil principal seem to not even care or notice. When Matilda begins school she suddenly discovers that she has great power within and finds a teacher who believes in her - Ms. Honey. She uses her brains and powers to protect those she loves and build a new life for herself!

The BFG by Roald Dahl

Ten year old Sophie begins the adventure of her life when one day she meets the Big Friendly Giant. He teaches her about creating dreams and about the dangers of evil giants. Together they travel to London to talk to Queen Victoria and keep the evil Giants from eating all of the children of England.

Zorgamazoo by Robert Paul Weston

This lively book about Katrina Katrell who runs away from her evil guardian is written entirely in verse. She embarks on an adventure with a creature called Zorgle from Zorgamazoo and meets many other interesting characters along the way!

Nooks and Crannies by Jessica Lawson

Six children receive mysterious invitations from a Countess to come to her house. Upon arrival these children discover that one of them is the Countess' grandchild and they all must work together to discover and unravel the mysteries of her house.

The Candymakers by Wendy Mass

Four kids are brought together for the Confectionery Association Conference and need to solve the mystery of a secret ingredient that has been stolen to create the best candy ever.

LCT teaches in YOUR school!

Would you like to see some of these play guide activities modeled in your classroom?

Book a workshop for your class with one of LCT's teaching artists! In our pre-show workshops, our teaching artists will engage students in acting skills and themes from the play through drama activities. In our post-show workshops, students will extend their play-going experience by strengthening their personal connection to the play and deepening their understanding of the themes and characters.



Call us at 859-254-4546 x226 to book a pre or post-show workshop for your class!

To learn more about Lexington Children's Theatre and our programming for your school visit:
www.lctonstage.org/for-educators/in-school-experiences/