

DIGITAL PLAYBILL



Aesop's

F

A

B

L

E

S

On Stage

By Larry and Vivian Snipes

LEXINGTON
CHILDREN'S THEATRE
Since 1938



Aesop's

FABLES

On Stage

By Larry and Vivian Snipes

Saturday, December 14 - 11:00am (Sensory Friendly)
Saturday, December 14 - 7:00pm (Pay What You Can Night)
Sunday, December 15 - 2:00pm

Tuesday - Friday, December 10 - 13,
and Tuesday - Thursday, December 17 - 19
10:00am & 11:45am

2019

2020-2021 Streaming Production Sponsored by:



Major Contributors



Aesop's **FABLES** On Stage

By Larry and Vivian Snipes

A-SOP, E-SOP OR EYE-SOAP?

The place where imagination and morals meet.

THREE ACTORS ON A STAGE ...AND EVERY CHARACTER THEY PLAY!

Thomas Costello	Hannah Hernandez	Darren Vance
<i>Hermes and the Woodcutter</i>		
Woodcutter & Greedy	Chorus	Hermes
<i>The Milkmaid and her Pail</i>		
Farmer	Milkmaid	Cow / Man
<i>The Goose with the Golden Eggs</i>		
Farmer	Wife	Goose
<i>The Lion and the Mouse</i>		
Hunter	Mouse	Lion
<i>A Few Fox Tales</i>		
Grapevine	Fox	Crow
<i>The Dog and the Bone</i>		
Dog's Reflection	Narrator / River	Dog
<i>The Ant and the Grasshopper</i>		
Grasshopper	Narration / Elements	Army Ant
<i>The Tortoise and the Hare</i>		
Tortoise	Hare	Narrator

FABLE FABRICATORS

Director.....	Larry Snipes
Scenic Designer.....	Eric Morris
Costume Designer.....	Eric Abele
Lighting Designer.....	John Ruml
Assistant Director.....	Esther Neel
Rehearsal Stage Manager.....	Courtney Sheffield
Performance Stage Manager.....	Ariel Tatum
Technical Director.....	Gabriel Slusser
Scenic Charge Artist / Properties Master.....	Maggie Foley
Production Construction Artists.....	Katie Adler, Aaron Bowling, MaKayla Reed Brown, Thomas Costello
Costume Shop Manager.....	Scarlett Kellum
Interim Costume Shop Manager.....	Ben Nabinger
Costume Construction and Cutter / Drapers.....	Scarlett Kellum, Ben Nabinger, Max Shumate, Jamie Taylor
Front of House Manager.....	Ashlee Collins
Box Office Personnel.....	Brittany Jones, Megan Kinney, Erin McGuire-Thompson
Educational Materials.....	Rhonda Bell, Zachary Fryman, Jeremy Kisling, Courtney Joy Miller, John Perine



**APPLY NOW
FOR 2021!**

We've been cultivating creative minds through a tradition of innovation and academic excellence for over 40 years. Whether your child is interested in theatre, art, science, math, or writing, discover a lifetime of learning at Community Montessori!

We welcome children starting at toddler (18 months) through 8th grade. Contact us today for a campus tour!



859.277.4805
CMSMONTESSORI.ORG

PONDERINGS OF A PENSIVE PLAYWRIGHT:

I find it a little difficult to call these “Director’s Notes.” Working on this show I felt more like a coach, a respondent, and a curator. *Aesop’s Fables* has graced our stage no less than four times since it was created almost nineteen years ago. Although the stories remain the same, the artists have changed from production to production. In this fourth iteration, I had the fortune of culling the input of three generations of creative minds that brought these stories to life. Our current cast added their own take, bringing new life and insights to the show. When all is said and done, the show you are watching is not so much a director’s work as it is the culmination of hundreds of hours of rehearsals and performances involving countless artists. I hope you enjoy our collaboration!

Larry Snipes, *Director*

AN ARTIST’S ACCOUNT:

The fables in this play were all written down at least 2,000 years ago, but many of them are probably much older than that, coming from many different cultures and locations. They belonged to an “oral tradition” that predates writing—where people passed on each story through word-of-mouth, causing them to morph and change as they passed from person to person. It’s entirely possible that you’ve heard versions of these stories that are a little different than the ones you’ll hear today—maybe told with different characters or containing a new moral. All these versions may be descendants of the same set of stories—simply told in a different way, or cast under a different light.

That’s my job: I help tell this story with light—light cast from steel instruments that are powered by electricity and controlled by a computer. I use different colors and patterns for each of the different scenes to help communicate each of the different times and locations you’re about to enter. In Aesop’s day, none of this was possible; you just had to make sure you built your theatre on the correct side of the mountain so the sun wouldn’t be in the audience’s faces. Aesop himself could probably never have imagined we’d tell his stories in this way! How do you tell stories? After you hear them today, these stories will belong to you as much as they belong to us or to Aesop. Will you tell them differently?

John Ruml, *Lighting Designer*

SUPERB SUPPORTERS

W. T. Young, Jr. and W.T. Young Storage; Dr. John Denison DDS; HighBridge Spring Water; Sally Horowitz, Sally Horowitz Photography; 3M Cynthia; Copy Express; Bobby Taylor; Mark Mahan, Mahan Multimedia; Matthew Snoddy, Network Therapists, Inc.; Pro Sound and Lights; Transylvania University Theater Department; University of Kentucky Department of Theatre and Dance

Lexington Children’s Theatre is a member of Theatre Communications Group (TCG), the national organization for the American Theatre

**Pay What
You Can Night
Sponsor:**





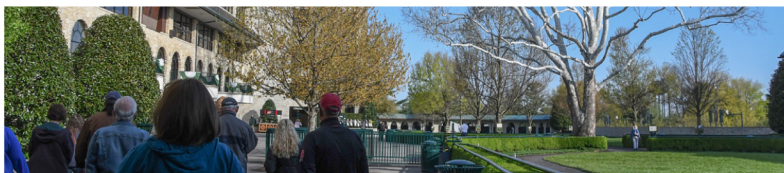
TOUR KEENELAND



MORNING WORKS TOUR

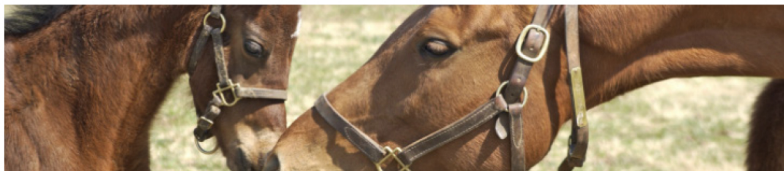
Offered Tues & Sat through the winter.

Private Tour - Available upon request, scheduled in advance.



PRIVATE TOUR

Private Tours available on select dates upon request. To schedule a private tour, please contact us at 859-288-4142 or tours@keeneland.com



HORSE COUNTRY

Access to horse farms, dedicated to sharing the stories of Kentucky's Horse Country, VisitHorseCountry.com.

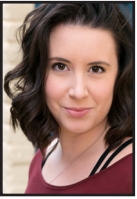


FOR A FULL LIST OF TOUR OPTIONS, VISIT KEENELAND.COM/DISCOVER/TOURS.
859-288-4142 OR TOURS@KEENELAND.COM

STORY SPINNERS:



THOMAS COSTELLO is thrilled to be returning for his second tour with Lexington Children's Theatre. You may have seen him last fall in *Jack and the Wonder Beans* (Jack) or *Amelia Earhart* (Reporter). He recently finished a run of *Jelly's Last Jam* (Melrose Brother) with the North Carolina Black Repertory Company and the National Black Theatre Festival. Thomas holds a BFA degree in Musical Theatre from The South Carolina School of the Arts at Anderson University. Much love and thanks to family, friends, and directors for the support and guidance received along the journey. Commit-trust-act, Psalm 37:5. thomas-costello.com.



HANNAH HERNANDEZ is a recent graduate from SUNY Fredonia with a BFA in Musical Theatre and is very excited to join Lexington Children's Theatre for their fall season! She was most recently seen in Western New York Chamber Orchestra's production of *My Fair Lady: In Concert*. Other favorite roles include: John Quincy Adams (*Bloody Bloody Andrew Jackson*), Lucio (*Measure for Measure*), Cha-Cha DiGregorio (*Grease*), Pozzo (*Waiting For Godot*), Mrs. Bumbrake/Teacher (*Peter and the Starcatcher*), and Belinda Blaire (*Noises Off!*). Thank you to Mom, Dad, and Jake for your constant love and support.



DARREN VANCE is thrilled to join Lexington Children's Theatre for the first time this season. Darren is a graduate from Catawba College where he earned his BFA in Musical Theatre and Minor in Dance. He recently finished a run as Race in *Newsies* at Lees-McRae Summer Theatre in North Carolina. He would like to thank his family, friends, Justin Bulla, and LCT for giving him an amazing opportunity to pursue his dreams while also making an impact on the next generation of theatre practitioners.

PERSONNEL PROFILES

ERIC ABELE (Costume Designer) Eric is a Lecturer of Costume Design at the University of Maryland, Baltimore County. He earned his MFA in costume design at the University of Tennessee. Eric worked full-time for LCT on and off from 2003 to 2014, designing costumes, puppets, scenery and/or props for over fifty productions. In his spare time, Eric enjoys traveling, reading, or playing with his ever-growing menagerie of animals.

KATIE ADLER (Production Construction Artist) Katie is excited for her first season at Lexington Children's Theatre! All the way from Pittsburgh PA, she is a recent graduate from Seton Hill University with her BFA in 2-D Art. In addition to her love of theater and paints, she enjoys cosplaying and metalsmithing.

SARAH JO ATWOOD (Stage Management Intern) Sarah Jo is thrilled to join LCT as their Stage Management Intern for the 2019-2020 season. She is a recent graduate of New York University with a BFA in Drama with a focus in stage management. She is ecstatic to begin her career with this amazing company.

RHONDA BELL (Resident Teaching Artist) Rhonda, a Nashville native, is excited to continue her experience at LCT as a Resident Teaching Artist. She holds an MA in Theatre from the University of Hawai'i at Mānoa and a BA from Berea College. Although she is a stage manager by trade, Rhonda enjoys teaching and spending time with kids.

OCTAVIA BIGGS (Director Shooting Stars Youth Theatre) Tavia has worked hard over the last 19 years to bring children's theatre to eastern Kentucky. She believes strongly that all children have the ability to be creative and through that creativity will discover the gifts they possess. She would like to thank LCT and the W. Paul and Lucille C. Little Foundation!

AARON BOWLING (Production Construction Artist) Aaron began his theatrical career performing in LCT's *Snow White*. Aaron is a graduate of UK and spent eight years working freelance across South Florida. Aaron worked as LCT's Technical Director and Resident Lighting Designer for over three years and continues to freelance in the Lexington area.

PERSONNEL PROFILES

MAKAYLA REED BROWN (*Production Construction Artist*) joined the Lexington Children's Theatre's production team for most of the 18-19 season. Before that she graduated with a degree in theatre from Morehead State University where she worked in the shop as a scenic artist for two years. She would like to thank all those who have supported her.

ASHLEE COLLINS (*Front of House Manager*) is thrilled to be back at LCT after two years working with Chicago Children's Theatre and Broadway in Chicago. You may remember Ashlee from LCT's *Duck for President*, *Old Dry Frye*, and *The Lion, the Witch, and the Wardrobe*. Ashlee is a Discovery Educator at The Living Arts and Science Center.

MAGGIE FOLEY (*Scenic Charge Artist/Props Master*) Maggie Foley is thrilled to be at LCT for another season of creative fun. She received her BA in Theatre with minors in English and Art History from North Central College in Naperville, IL and is glad to put it to use at such a great place.

ZACHARY FRYMAN (*Resident Teaching Artist*) Zachary was born and raised in Dry Ridge, KY graduation with a B.A. in Theatre from Morehead State University. During his time at MSU, Zachary toured with The Little Company as an actor and teaching artist, directed *The Giver*, and choreographed pieces for the dance department.

BRITTANY JONES (*Arts Administration Intern*) Brittany recently relocated from Jackson, MS where she received her B.A. in Theatre from Belhaven University. While obtaining her degree, Brittany married her high school sweetheart and together, they welcomed their daughter to the world last December. Brittany is thankful for the opportunity to intern with LCT.

SCARLETT KELLUM (*Costume Shop Manager*) Scarlett is excited to join the LCT team. She started her career in theater in Northern California where she was the costume shop manager/costume designer at Theatre Rhinoceros, Second Wind Theater, Custom Made Theater, Berkeley Youth Theater, Dragon Theater and others.

JEREMY KISLING (*Associate Artistic Director in Charge of Education*) Welcome to LCT! Jeremy is so grateful for the community's continued support of our theatre. He received his undergraduate degree from the University of Northern Iowa and his M.F.A. in Drama and Theatre for Youth from the University of Texas at Austin. He hopes you take time to stretch your imagination!

COURTNEY JOY MILLER (*Education Intern*) Courtney is a born and raised Montana native, and is honored to join LCT for the first time in their 2019-2020 Season. She earned her BA in Acting & Directing from the University of North Dakota and has also served as an Education Intern with Seattle Children's Theatre.

ERIC MORRIS (*Scenic Designer*) With the help of good and patient teachers, Eric graduated Augusta College and later earned an MFA in Stage Design from Western Illinois University. He has designed and produced live music stages, trade shows, dance, opera, and theatre. For more than a decade he served as the resident scenic and lighting designer for LCT, where, with a dedicated staff of talented professionals, and just good people, he helped produce work seen by hundreds of thousands of Kentucky children and adults. He is currently on faculty with University of South Carolina, and the Designer/Production Manager for USC Dance. Mornings, nights, and weekends he writes poems and stories and in the in-between he writes and records music as one half of the duo, Classes of Dynamo. In 2015 his novel *Jacob Jump* was published by Mr. Pat Conroy's Story River Books. He lives in Columbia, South Carolina, with his lovely wife and handsome son.

BEN NABINGER (*Interim Costume Shop Manager*) Ben received his BA in Theatre at the University of Maryland, Baltimore County and worked with LCT for over two years as a Costume Intern, Journeyman, and Interim Costume Shop Manager. He recently departed LCT to pursue his next adventure – his graduate degree from UCLA.

ESTHER NEEL (*Assistant Director*) Esther holds a BA in Theatre Arts with a concentration in Scenic Art from Taylor University in Indiana. Her first year with LCT was as a Scenic Charge Artist. Now in her sixth year with LCT (and the new title of Associate Director), Esther has directed *Fancy Nancy the Musical*, *Peter Pan Jr.*, *The Legend of Sleepy Hollow*, *Charlotte's Web* and most recently *Holes* among many others.

JOHN PERINE (*Education Intern*) is originally from right outside of Nashville, Tennessee, and is a recent BFA Theatre for Youth graduate from Samford University, where he trained as a director, performer, and educator. He is thrilled to spend his first year in the professional world as a part of the Lexington Children's Theatre team!

JOHN RUML (*Lighting Designer*) is a theatrical technician and sound designer born in Redlands, CA. His previous work includes the 18/19 season at Richmond Ballet and two summers at

PERSONNEL PROFILES

Stagedoor Manor, where he designed more than forty productions. This is his inaugural season at LCT, and he looks forward to new experiences and challenges.

COURTNEY SHEFFIELD (*Rehearsal Stage Manager*) Courtney graduated with a B.A. in Theatre Arts from the University of Minnesota. As a second grader, one of her first theatrical roles was as the Crow in Aesop's well-known tale, *The Crow and the Water Jug*. The "jug" was played by a 20 gallon bright orange sports cooler.

MAX SHUMATE (*Costume Construction/Cutter/Draper*) is excited to be doing an internship at LCT! Max is 22 years old and from Clayton, NC. Max is fresh out of college with a BA in Theatre Studies with a focus in costume design.

GABRIEL SLUSSER (*Technical Director*) Gabriel Slusser is thrilled to join the LCT family. Originally from Georgia, he earned a B.A. in Theatre from Piedmont College. He has worked at theatres across the eastern United States, including Titusville Playhouse, Georgia Ensemble Theatre, and Stagedoor Manor.

LARRY SNIPES (*Director/Playwright*) Larry has served as LCT's Producing Director since 1979. After completing his MA in theatre for young audiences at Alabama's University of Montevallo, he worked for two years as a professional actor and director in the Washington DC, metropolitan

area. He has directed a multitude of productions for LCT and written several plays including *Jack and the Wonder Beans*, *Cows Don't Fly* and other known facts, and *Old Dry Frye*.

VIVIAN SNIPES (*Artistic Director/Playwright*) Vivian has worked at LCT for almost 40 years wearing whatever hat is required to help the theatre move forward and grow. She loves her job and the challenges that each new day brings. A true believer that everyone is an artist (especially when observing and interacting with other people) she challenges you to live an art full life. Be daring – try something new – apply your personal artistry in everything you do, enjoy being unique, and always breathe with purpose and act in kindness. Thank YOU for being pART of the ART!

ARIEL TATUM (*Performance Stage Manager*) Ariel is proud to join LCT for another season! She holds a B.S. in Child and Family Studies from Freed Hardeman University in Tennessee. Ariel enjoyed finding her family here at LCT last year and is excited to create new stories to share with you.

JAMIE TAYLOR (*Costume Construction/Cutter/Draper*) graduated from Mississippi State University and is excited to start her career with LCT. Jamie studied fashion design and found her home in the theatre costume shop. She plans to pursue an MFA. Jamie is passionate about TYA and can't wait to pour into the next generation of theatre artists.

MAJOR CONTRIBUTORS

The logo for LEX ARTS, with 'LEX' in a simple sans-serif font and 'ARTS' in a larger, multi-colored font (pink, blue, green, yellow) with a trail of small dots extending to the right.

THE SHUBERT FOUNDATION INC.

NATIONAL ENDOWMENT FOR THE ARTS
arts.gov

KENTUCKY ARTS COUNCIL
The Kentucky Arts Council, the state arts agency, supports Lexington Children's Theatre with state tax dollars and federal funding from the National Endowment for the Arts.

MEDIA SPONSORS



859.317.8316

WWW.KEYSTONEKY.COM

Bravo cast, crew, and staff at Lexington Children's Theatre!

KEYSTONE FINANCIAL GROUP

KFG Advisors partner with individuals and businesses to help implement wealth accumulation strategies while managing risk for overall portfolio management and retirement planning.

- Comprehensive Financial Planning
- Education Planning & 529s
- Charitable Giving
- 401ks, IRAs, Trust Accounts, and more
- Retirement Planning
- Portfolio & Wealth Management

*Securities offered through LPL Financial.
Member FINRA/SIPC. Investment advice
offered through Keystone Financial Group, a
registered investment advisor and separate
entity from LPL Financial.*



LCT PROFESSIONAL STAFF

Larry Snipes, Producing Director
Vivian Snipes, Artistic Director
Rachel Ray, Development Director
Tiffany Dupont Novak, Marketing and Sales Director
Kathryn Henriques, Marketing and Sales Manager
Jeremy Kisling, Associate Artistic Director in Charge of Education
Rhonda Bell, Resident Teaching Artist
Zachary Fryman, Resident Teaching Artist
Octavia Biggs, Program Director of Shooting Stars Youtheatre (SSYT)
Erin McGuire-Thompson, Finance and Box Office Manager
Megan Kinney, Audience Experience Associate
Courtney Sheffield, Production Stage Manager
Ariel Tatum, Resident Stage Manager
Maggie Foley, Charge Artist / Technical Director
Gabriel Slusser, Technical Director / Master Carpenter
John Ruml, Assistant Technical Director / Lighting & Sound Technician
Scarlett Kellum, Costume Shop Manager / Designer
Esther Neel, Associate Director

LCT BOARD OF DIRECTORS

Thank you to the Lexington Children's Theatre
2019/2020 Board of Directors for their dedication to
providing arts opportunities for young people.

Jason Ams

Resa Browning

David Carpenter

Jason Collins

Lydia Curtz

Thomas Flanigan

Caroline French

Nancy Fulks

Treasurer

Lisa Deaton Greer

Susan Herren

Stephanie Hong

Jennifer Hurst

David Kidd

President

Lezell Lowe

Tim Martin

Ann-Phillips Mayfield

President Elect

Tawanda Lewis Owsley

Matthew Parsons

Ali Robinson

Catherine Salsman

Treasurer Elect

Melia Schmidt

Kevin Sisler

Jason Washington

Todd Wetzell

Tracy Whipple

Secretary





How do you
attract top talent
to your company?

**Get employee
benefits that work
as hard as they do.**

 **BimGroup**



Benefit Consultants & Advisors

bimgroup.us

1151 Red Mile Rd

Lexington, KY 40504

859.255.9455



Corporate

Platinum Circle (\$20,000+)

Toyota Motor Manufacturing,
Kentucky in Georgetown
VisitLEX

Gold Circle (\$10,000-19,999)

Central Bank & Trust Co.
Central Bank & Trust Co. Employees
Fifth Third Bank Employees
Keeneland Foundation
Lexington Trots Breeders Assn /
Red Mile
PNC Bank

Silver Circle (\$5,000-9,999)

Alltech
Bluegrass Sotheby's International
Caller Properties, LLC
CHI Saint Joseph Health
Foundations
DaRae and Friends Catering*
Davis & Plomin Mechanical
E.E. Murry Family Foundation
Fifth Third Foundation
Gray Construction Employees
Hinkle Studio*
KEMI
Kentucky Bank
Lexington Fayette Urban Co Govt
Employees
LG&E and KU Energy LLC
Messer Construction Company
Employees
Rosenthal Family Foundation
Salomon & Company
Valvoline
War Admiral Place / Sir Barton Place
WesBanco Bank, Inc.

Bravo Circle (\$2,500-4,999)

859print, Inc.*
Blue & Co LLC
Blue & Co LLC Employees
Columbia Gas of Kentucky
Commerce Lexington Employees
Dean Dorton Allen Ford, PLLC
Employees
Dinsmore & Shohl Employees
Kentucky American Water Co.
LexArts Employees
Messer Construction Company
Padgett Construction, Inc.
The Apiary*
Wyatt Tarrant & Combs, LLP

Patron's Circle (\$1,000-2,499)

Bank of the Bluegrass and Trust Co.
Employees

Commerce Lexington
Community Trust Bank
Crowe Horwath Foundation
Dean Builds, Inc.
Dean Dorton Allen Ford, PLLC
Eastern Kentucky University
EOP Architects
Forcht Bank
G&J Pepsi-Cola Bottling Co. of
Lexington, KY

Highbridge Spring Water Co.
J. Smith Lanier & Co., a Marsh &
McLennan Agency LLC Company
J. Smith Lanier & Co. Employees
JRA Architects
Langley Properties Co.
Lexington Children's Theatre
Employees
Lexington Clinic
Lexington Herald-Leader*
Lexington Quarry Company
Matthew Carter Interiors, LLC
Mehr, Fairbank and Peterson
Mountjoy Chilton Medley, LLP
National Thoroughbred Racing Assn
Employees
Oculus Studios
PNC Bank Employees
Portofino
Quantrell Auto Group
Serafini
Stites & Harbison Employees
Stoll Keenon Ogden Employees
Tate Hill Jacobs: Architects, Inc.
Tri-State Roofing & Sheet Metal
Company
Unified Trust
WLEX-TV

Arts Advocate (\$500-999)

Allied Communications, Inc.
Bank of the Bluegrass and Trust Co.
Bates Security LLC
BC Wood Properties
Bluefire Capital
Brand Advertising Group
Chevy Chase Animal Hospital
Christopher Michael Fine Furniture
Clay Ingels Company, LLC
E. S. Barr & Company
K Norman Berry Associates
Architects
Kentucky Blood Center
Keystone Financial
Landrum & Shouse
Lexington Herald-Leader
Limestone Bank
Marrillia Design and Construction
NAI Isaac Commercial Properties
Nicholson Insurance Agency
Palumbo Lumber Company
Pink Spider
South Central Bank
Traditional Bank

Webb Companies
Wrigley Media Group*
Wyatt, Tarrant & Combs Employees
Individuals

National Arts Advocates (\$5,000+)

Jill Hall Rose
Craig and Madonna Turner
Dr. and Mrs. J. Sloan Warner Jr.

Ovation Society (\$2,500-4,999)

Ann Bakhaus
Luther Deaton Jr.
James and Suzanne Elliott
Harold Faulconer
Andy and Kristina Shea
Jim Stokes and Jo Ann Czekalski
Walter L. Gross III Family Foundation
Lona Tracee Whitley

President's Circle (\$1,000-2,499)

James C. Albisetti
Alpenglow Foundation
James Baldridge
Heather Barron
Jeremy Bates and Denny McElroy
Robert and Judith Baumann
Tom and Cindy Bloch
Anne E. Bolton
Rod and Diane Boyer
Jed and Sherri Bullard
Wells Bullard and Harding Dowell
Jeff and Lora Carter
John and Jill Cioci
Julia and Timothy Costich
Norwood and Judy Cowgill Jr.
Chuck and Susan Creacy
Lisle and Katherine Dalton
Mark and Laura Day Delcotto
Beverly Fortune
John L. Gohmann
Gina Greathouse
Roy E. Griggs
John and Donna Hall
Debra Hensley and Melissa Watt
Phillip and Nancy Hoffman
Larry and Jan Isenhour
Stephen and Robin Jennings
Magdalene Karon and John D. Stewart II
Bruce and Jeannette Lucas
Ana Maldonado-Coomer
Wayne and Susan Masterman
David E. McDowell
Carol McLeod
Michael and Catherine Mills
Paul Mulhollem and Valerie Cravens
Allen Norvell

Martha Peterson and Brett Spear
John and Kathy Plomin
Mark and Ann Plummer
Nan Plummer and Jim Spencer

Sean Proffitt
Robert E. Putt Jr.
James and Yvonne Rickard
Marilyn Robie and Arthur Shechet
Doug and Melanie Roederer
Chad Rudzik
Marion Rust
Andrea Schaefer
Laura Schweitzer
J. David Smith Jr.
Maury Sparrow and Craig Wahlgren
Leonard Spencer
Joshua R. Stephenson
Jon and Melissa Stewart
Robert and Ruth Straus
Fran Taylor and Tom Cheek
Franklin D. Thompson
Ellen Tunnell
John Van Meter
Laurance and Lucy VanMeter
Alex and Jayne Waldrop
Byron and Deborah Westerfield
Chris and Josefine Young

Arts Advocate (\$500-999)

Mr. and Mrs. Farra M. Alford
Larry and Carol Beach
Lynda Bebrowsky
Brenda Bragonier
Willy Brown and Eddie Woods
Brent Bruner and Matthew Carter
Diane Brunn
Timothy Burcham and Phillip Marcum
Eli and Mary Lynne Capilouto
Linda Carroll and John S. L. Morgan
Bob and Jamie Carter
William and Ellen Chapman
John and Nancy Cirigliano
Tim and Debby Coleman
Richard Comley and Debbie
Sutherland-Comley
Marcia Cone
Craig L. Daniels
Susan Daugherty and Shane Lyle
Rebecca Ann Davis
Larry and Martha Deener
David and Melanie Dowell
Letha T. Drury
Avi and Ronit Eres
Ben and Laura Eubank
Carson and Janet Evans
William Fortune
Charles and Linda Gorton
Guy and Terry Graves
Stefania Greene
Thomas Hammond
Gerry and Cassie Harpel
Frank and Elsie Harris
Phyllis R. Hasbrouck
Georgia Henkel
Barry and Billie Hickey
Joseph and Shannon Hillenmeyer
April M. Howard
Steve Hupman

Michael and Christine Huskisson
David and Katherine Johnson
Paul Johnston
Allison Kaiser
Melinda Karns and Rick Chrisman
Edward and Mary Kasarskis
Leslie Keller-Bieh1
William Kyle
Dean Langdon
Nathan and Blair Lee
Joel and Tomoka Logan
William Loggins and Anthony Burgett
Valerie Marshall
Marc and Gwen Mathews
Robert and Denise McClelland
Emily Meek
Jason and Kristin D. Miller
John and Luanne Milward
Rosie R. Moosnick and Theodore
Schatzki
Michael and Robin Morrill
Jeff Murphy
Paul and Becky Ochenkoski
Frank and Rita Penn
Gregory Pettit
Anne and Tom Pittman
Mary Quinn Ramer
Greg and Susan Rayer
Michelle Reid
Becky and Reese Reinhold
David W. Richard
Rosenstein Family Charitable Foundation
Arturo Alonzo Sandoval
Janet Scheeline and Billy Spickard
Ginny and Mark Shanda
Rebecca Sherman
Camden and Kim Skidmore
Larry and Vivian Snipes
Robert Stadelman
Harvey Sword
Harold R. Tate
Barbara S. Tilghman
Joyce Trivette
Dorothy H. Clark Van Meter
Derek and Neal Vaughan
Andy Walker
George and Lorie Ward
Mary-Alicha and Brian Weldon
Yajaira Aich West
Harvie and Nellie Wilkinson
Jeff Woods
Julia C. Young
Nathan and Cat Zamarron

Arts Partner (\$300-499)

Glenn and Lisa Acree
Guy W. Adams
John Anthony Allen
Robert Arrasmith
Kristen and Perry Bentley
Stacy and Ted Berge
Wanda Bertram and Gary Huff
Carl and Barbara Boyer
Linda Breathitt
Carolyn M. Brown

David Bugg
Nancy Carpenter and Jeff Davis
Lee Carroll and Connie Milligan
Gordon and Khris Cole
Joseph Coleman
Emily Downey
Vera Dubilier
Dianna Herndon Flanagan
Shelby Fryman
Ken and Ellen Gish
Larry and Ricki Goldstein
Jill and Cliff Gookin
Tyler Gossett
Curtis Green
Lucy Hamilton
Xavier Hassert
Lon and Ann Hays
Cynthia Hiens
Mark A. Hill
Nathan and Tempa Hohman
Marie Houlihan
Leo and Vickie Hugenberg
Greg Jenkins
Thomas B. Kessinger III
Jon and Amy Kostelic
Rebecca B. Lewis
Wayne and Susan Lucas
Heather Lyons
Phyllis MacAdam
Samuel C. Matheny
Richard Milich
Bruce and Martha Nicol
Tiffany and Tyler Novak
Ted and Anne Clay Oldham
Jeremy Paden
Jeremy Parker
Jane E. Phillips
Philip and Loris Points
Kevin Pulsfort
Robert and Julie Quick
Dana Rhodus
Mark and Sarah Richardson
Robert E. Milward Fund
Mark T. Ruddell
Cathy Rupp
Jean Sabharwal
Kate Savage
Gina Sheffer
Jody Shoup
Louise H. Shouse
Susan Simmons
Hannah Sloan
Reginald Smith
Scott Smith
Roger and Lynsey Sugarman
Ouida Tisdall
John and Jacqueline Van Willigen
Josh Warren
Mike Wedding
David and Susan Whitehouse
Kathryn Wilson

LCA

Why Choose Us?

Serving PS-12th Grade from 12 Central Kentucky Counties

Faith Based & Nurturing Environment

College Prep Curriculum

Performing & Visual Arts (Elementary - High School)

Award Winning Band and Choral Programs

Annual Cabaret, Drama and Musicals

Array of Co-Curricular Programs (Arts, Athletics, Leadership and Service)

100% Graduation Rate



Have **CONFIDENCE** in a Christ-centered,
QUALITY education!

Connect with Us

Lexington Christian Academy

Phone: (859) 422-5700

www.lexingtonchristian.org



Thank you to the individuals and families who have donated to our 2019-2020 Annual Campaign!

Giant Star (\$1,000 – \$1,499)

Ball Homes
D&D Machinery Movers
Ann-Phillips Mayfield and Jay Ingle
David and Shelly Kidd

Shooting Star (\$500 – \$999)

Kevin Ausbrook
Resa Browning
Nancy Fulks
The Gorrell Family
Nathan and Tempa Hohman
Brett Ison
Lezell Lowe
Brian and LaToi Mayo
Matthew Parsons
The Salsman Family
The Snipes Flock
Lydia Curtz and Ben Tuttle
The Whitaker/Hays Family

Shining Star (\$250 - 499)

Alanson Horton Boden
John and Jennifer Brown
John Gensheimer
Lisa Deaton Greer
Mark and Susan Herren
Stephanie Hong
Breck and Joy Johnson
Janet and Bob Kinstle
William Leach
William Mitchell
Edna Monroe
Jim and Stacey Richardson
Laura Hayden & John Van Nagell
The Whipple Family
Wigginton Vending Company
Jack and Rebecca Wilson

Rising Star (\$100 - \$249)

LuAnn Asbury
Anne Hooper Bartlett

Robert and Judith Baumann
Amanda Byrd
Raynond Campbell in honor of
Carolyn S. Connell
Mark Cobane in honor of David Kidd
Chad and Trish Crouch
Fernando and Anne DeCastro
J. Randall Dennison
Janet Estepp
Beverly Fortune
Ted and Jane Fraebel
Rebecca Goodman
Erin and Greg Goins
Jeff Hargus
Amy Harris
Chris Heinz
The Hensley Family
Kroger
Sheilah Kurtz
Brent and Brandi Lambert
Elizabeth Leatherman
Nathan and Blair Lee
Merdith Lepley
The Mancuso Family
Michael Mason
Britney Moughamian
Jacquelin and Joseph Murphy
Jen Brown-Murphy & Gary Murphy
Christopher & Kelly Norris
The Novak Family
Reilly Richardson
Taggert Robinson
Melanie Simpson
Brandon, Jennifer, and Kaitlyn Stiff
Betsy Waters
Todd Wetzell
Claire Whipple
Brian and Jennifer Wilson
Jack and Angene Wilson
Steve and Michelle Wrightson

To make your donation, please visit our website at www.lctonstage.org, call us at 859-254-4546, or contact our Development Director, Rachel Ray, at r-ray@lctonstage.org.



**Uncompromised
Financial Strength,
Unparalleled Customer &
Community Service**

**To bank local, call (859) 233-4500 or
visit bankofthebluegrass.com today.**

Member
FDIC





THANK YOU
for reading our

DIGITAL PLAYBILL



Please visit our website at
www.lctonstage.org
to learn more about our
upcoming shows and classes!


LEXINGTON
CHILDREN'S THEATRE
Since 1938